

3rd Eilat International Educational Course:

PHARMACOLOGICAL TREATMENT OF EPILEPSY

Israel, September 6-13, 2009

Announcement and Call for Abstracts

Under the auspices of

ILAE - CEA

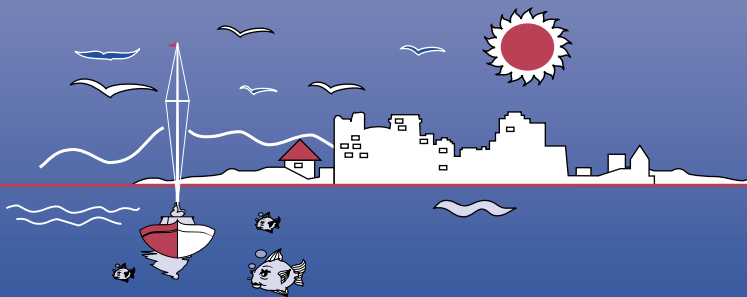
ILAE Commission on European Affairs (CEA)
European Epilepsy Academy (EUREPA)



The Hebrew University of Jerusalem, Israel



Epilepsy Therapy Development Project, USA



Dear Colleagues

Following the success of our previous two International Educational Courses in September 2005 and September 2007, it gives us great pleasure to inform you of the forthcoming 3rd Eilat International Educational Course: PHARMACOLOGICAL TREATMENT OF EPILEPSY, which will take place at the Princess Hotel, Eilat, Israel, September 6-13, 2009.

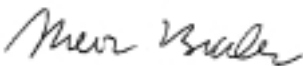
Eilat, located on the Red Sea and southern most tip of Israel, is far from the center of Israel. The Princess Hotel, the venue for our Course, is just outside Eilat, located on the Red Sea overlooking the Red Mountains and Jordan in the distance. Its isolated location is perfect for the intensive, stimulating scientific program we have planned, but close enough for participants to enjoy all that Eilat has to offer.

The Course program is designed for junior registrations (45 years and younger), and we are happy to inform you that a number of bursaries have been made available by the ILAE Commission on European Affairs (CEA) towards partially defraying the cost of flight and accommodation expenses of bursary recipients, who will also have their registration fees waived.

The course is under the auspices of the ILAE Commission on European Affairs (CEA) and the European Epilepsy Academy (EUREPA).

We look forward to welcoming you to Eilat in September 2009.

Sincerely



Prof. Meir Bialer, Chairperson
on behalf of the Organizing Committee

ORGANIZING COMMITTEE

M. Bialer, Israel, *Chairperson*

A. Guekht, Russia

S.I. Johannessen, Norway

C. Ozkara, Turkey

E. Perucca, Italy

T. Tomson, Sweden

F. Vigevano, Italy

TENTATIVE TIMETABLE

Sunday, September 6, 2009

All day Arrival and hotel check-in
Evening Get-together

Monday, September 7, 2009

Full day Welcome Address and
 Introduction to Course
 Sessions
Evening Dinner

Tuesday, September 8, 2009

Full day Sessions
Evening Dinner

Wednesday, September 9, 2009

Full day Sessions
Evening BBQ Dinner

Thursday, September 10, 2009

Morning Sessions
Afternoon At leisure
Evening Gala Dinner

Friday, September 11, 2009

Full day Sessions
Evening Dinner

Saturday, September 12, 2009

Full day Sessions
Evening Dinner

PRELIMINARY PROGRAM

SUNDAY, SEPTEMBER 6, 2009

All Day Arrival and hotel check-in
Afternoon Registration and Distribution of Course Material
20:00 Get-Together, Princess Hotel

MONDAY, SEPTEMBER 7, 2009

08:30 - 09:15 Opening Session

WELCOME ADDRESS AND
INTRODUCTION TO THE COURSE

INTRODUCTION TO THE COURSE
T. Tomson, Organizing Committee, Sweden

STUDENT INTRODUCTIONS
Each student to present him/herself

09:15 - 10:00 INTRODUCTORY LECTURE

Chairpersons: **G. Avanzini**, Italy
H.S. White, USA

09:15 DEFINITIONS, CLASSIFICATION AND
EPIDEMIOLOGY OF SEIZURES AND EPILEPSY
P. Wolf, ILAE President, Denmark

09:45 Discussion

10:00 - 14:30 Session I

THE PHARMACOLOGY OF AEDs

Chairpersons: **G. Avanzini**, Italy
H.S. White, USA

10:00 MECHANISMS OF ACTION OF AEDs
H.S. White, USA

10:30 Discussion

10:45 *Coffee*

11:15 EXPERIMENTAL MODELS FOR THE DISCOVERY
AND TESTING OF AEDs
H.S. White, USA

11:45 Discussion

MONDAY, SEPTEMBER 7, 2009 (cont.)

10:00 - 14:30 Session I (cont.)

12:00 ANTIEPILEPTIC VS ANTIEPILEPTOGENIC EFFECTS
 G. Avanzini, Italy

12:30 Discussion

12:45 *Lunch*

13:45 MECHANISMS OF DRUG RESISTANCE
 S. Shorvon, UK

14:15 Discussion

14:30 - 18:00 Session II

PHARMACOKINETICS AND THERAPEUTIC DRUG MONITORING

Chairpersons: **S.I. Johannessen**, Norway
 R.H. Levy, USA

14:30 BASIC PRINCIPLES OF PHARMACOKINETICS
 M. Bialer, Israel

15:00 Discussion

15:15 THE PHARMACOKINETICS OF AEDs: AN OVERVIEW
 M. Bialer, Israel

15:45 Discussion

16:00 *Coffee*

16:30 PHARMACOKINETICS OF AEDs IN SPECIAL
 POPULATIONS
 S.I. Johannessen, Norway
 C. Johannessen Landmark, Norway

17:00 Discussion

17:15 PHARMACOKINETIC OPTIMIZATION OF AED
 THERAPY UTILIZING TDM
 S. I. Johannessen, Norway

17:45 Discussion

19:30 *Dinner*

TUESDAY, SEPTEMBER 8, 2009

09:00 - 12:45 Session III

DRUG INTERACTIONS

Chairpersons: **M. Bialer**, Israel
R.H. Levy, USA

09:00 MECHANISMS AND PREDICTION OF METABOLIC
BASED INTERACTIONS OF AEDs
R.H. Levy, USA

09:30 Discussion

09:45 MECHANISMS AND PREDICTION OF
TRANSPORTER-BASED INTERACTIONS OF AEDs
R.H. Levy, USA

10:15 Discussion

10:30 *Coffee*

11:00 CLINICALLY-RELEVANT DRUG INTERACTIONS IN
EPILEPSY
P. Patsalos, UK

11:30 Discussion

11:45 – 13:00 GUIDED PK PROBLEM SOLVING EXERCISES

(breakdown into 2 groups)

M. Bialer, Israel

S. I. Johannessen, Norway

C. Johannessen Landmark, Norway

R. H. Levy, USA

P. Patsalos, UK

13:00 *Lunch*

14:30 - 17:00 PK PROBLEMS AND DRUG INTERACTIONS
(15:45-16.00 Coffee Break)

(breakdown into 3 groups)

M. Bialer, Israel

S. I. Johannessen, Norway

C. Johannessen Landmark, Norway

R. H. Levy, USA

P. Patsalos, UK

T. Tomson, Sweden

E. Perucca, Italy

19:00 *Dinner*

WEDNESDAY, SEPTEMBER 9, 2009

09:00 - 13:00 Session IV

ASSESSING EFFICACY AND SAFETY (1)

Chairpersons: **E. Perucca**, Italy
T. Tomson, Sweden

09:00 THE 4 PHASES OF DRUG DEVELOPMENT
M. Bialer, Israel

09:30 Discussion

09:45 RANDOMIZED CONTROLLED TRIALS
M. Baulac, France

10:15 Discussion

10:30 *Coffee*

11:00 SPECIFICITIES OF TRIAL DESIGN FOR CHILDREN
F. Besag, UK

11:30 Discussion

11:45 STATISTICAL PRINCIPLES APPLIED TO DESIGN AND ANALYSIS
E. Bonizzoni, Italy

12:45 Discussion

13:00 *Lunch*

14:30 - 17:30 **PARALLEL SESSIONS**
(16:00-16.30 Coffee Break)

Session A

STUDENTS PRESENT CLINICAL PROBLEM CASES

Session B

STUDENTS PRESENT PROBLEMS IN BASIC SCIENCE

Tutors for both sessions:

M. Baulac, France

M.J. Brodie, UK

F. Besag, UK

F. Vigevano, Italy

K. Malmgren, Sweden

H.S. White, USA

P. Wolf, Denmark

19:00 *BBQ Dinner*

THURSDAY, SEPTEMBER 10, 2009

09:00 - 12:00 Session V

ASSESSING EFFICACY AND SAFETY (2)

Chairpersons: **M.J. Brodie**, UK
K. Malmgren, Sweden

- 09:00 METANALYSIS
E. Beghi, Italy
- 09:30 Discussion
- 09:15 REGULATORY AFFAIRS OF AEDs
M. Baulac, France
- 09:45 Discussion
- 10:00 *Coffee*
- 10:30 UNCONTROLLED STUDIES
E. Perucca, Italy
- 11:00 Discussion
- 11:15 PRAGMATIC TRIALS
M.J. Brodie, UK
- 11:45 Discussion
- 12:00 ADVERSE EFFECTS OF AEDs
A. Covanis, Greece
- 12:30 Discussion
- 12:45 *Lunch*

Afternoon free for academic and social intermingling

19:00 *Gala Dinner*

FRIDAY, SEPTEMBER 11, 2009

09:00 - 12:30 Session VI

OPTIMIZING MEDICAL MANAGEMENT (1)

Chairpersons: **G. Avanzini**, Italy
P. Wolf, Denmark

- 09:00 TO TREAT OR NOT TO TREAT?
T. Tomson, Sweden
- 09:30 Discussion

FRIDAY, SEPTEMBER 11, 2009 (cont.)

09:00 - 12:30 Session VI (cont.)

09:45 SELECTION OF DRUGS FOR INITIAL TREATMENT
OF CHILDREN
F. Besag, UK

10:15 Discussion

10:30 *Coffee*

11:00 SELECTION OF DRUGS FOR INITIAL TREATMENT
OF ADULTS
M.J. Brodie, UK

11:30 Discussion

11:45 OPTIMIZING DOSAGE
T. Tomson, Sweden

12:15 Discussion

12:30 *Lunch*

14.00-16.00 Session VII

OPTIMIZING MEDICAL MANAGEMENT (2)

Chairpersons: **A. Guekht**, Russia
K. Malmgren, Sweden

14:00 WHAT STRATEGY WHEN THE INITIAL DRUG FAILS
E. Beghi, Italy

14:30 Discussion

14:45 MANAGING THE SEVERELY REFRACTORY PATIENT
K. Malmgren, Sweden

15:15 Discussion

15:30 *Coffee*

16:00 - 18:00 JOURNAL CLUB TUTORIAL

Tutors:

F. Besag, UK

K. Malmgren, Sweden

E. Perucca, Italy

S. Shorvon, UK

F. Vigevano, Italy

H.S. White, USA

19:00 *Dinner*

SATURDAY, SEPTEMBER 12, 2009

09:00 - 12:30 Session VIII

OPTIMIZING MEDICAL MANAGEMENT (2)

Chairpersons: **A. Guekht**, Russia
C. Özkara, Turkey

09:00 SEIZURE AGGRAVATION BY AEDs
E. Perucca, Italy

09:30 Discussion

09:45 TERMINATION OF AED THERAPY IN SEIZURE FREE PATIENTS
K. Malmgren, Sweden

10:15 Discussion

10:30 *Coffee*

11:00 - 16:15 Session IX

OPTIMIZING MEDICAL MANAGEMENT (3): SPECIAL SITUATIONS/SPECIAL GROUPS

Chairpersons: **S. Shorvon**, UK
F. Vigevano, Italy

11:00 ACUTE REPETITIVE SEIZURES AND STATUS EPILEPTICUS
S. Shorvon, UK

11:30 Discussion

11:45 PREGNANCY AND BREAST FEEDING
T. Tomson, Sweden

12:15 Discussion

12:30 *Lunch*

14:00 MEDICAL MANAGEMENT OF EPILEPSY PATIENTS WITH CO-MORBIDITIES
A. Guekht, Russia

14:30 Discussion

14:45 PEDIATRICS
F. Vigevano, Italy

15:15 Discussion

15:30 THE ELDERLY
M. Neufeld, Israel

16:00 Discussion

16:15 *Coffee*

20:00 *Dinner*

CALL FOR ABSTRACTS

Deadline – May 25, 2009

The Course is targeting young neurologists/epileptologists in training. Submitting an abstract is a good opportunity to present your scientific interest and have the work discussed with faculty members and other students during group sessions. Participants wishing to present a paper are requested to submit an abstract to the Secretariat, by e-mail to: eilatedu@targetconf.com

All accepted abstracts will be scheduled for poster presentation. Inclusion of abstracts in the scientific program is dependent on payment of registration fees

INSTRUCTIONS FOR THE PREPARATION OF ABSTRACTS

1. Abstracts must be submitted in English.
2. Title should be typed in CAPITAL LETTERS, bold and left aligned.
3. Presenting author's name should be underlined and bolded. If submitting more than one abstract, each abstract must be sent as a separate e-mail message and the title should indicate that these are separate abstracts, i.e. JILL BROWN ABSTRACT 1; JILL BROWN ABSTRACT 2.
4. The entire abstract should be approx. 250 words, including, title, author(s), institution(s), country and acknowledgements.
5. Recommended font is Times New Roman, size 12 points, single spacing.
6. No end-notes or frames are acceptable.
7. Please note: Faxed abstracts will not be accepted.

COURSE SECRETARIAT

For any additional information, please contact the Secretariat:
Target Conferences

P.O. Box 29041, Tel Aviv 61290, Israel

Tel: +972 3 5175150

Fax: +972 3 5175155

email: eilatedu@targetconf.com

GENERAL INFORMATION

LOCATION

Princess Hotel, Eilat, Israel is the Course venue.

LANGUAGE

The Course will be conducted in English

REGISTRATION FEES

July 10, 2009

	Before	After
Participant	US\$ 700	US\$ 800

Registration fees for participants include entrance to all sessions, program and course kit, lunches and dinners as of evening of September 6 up to and including September 12, as well as participation in the social program.

*Registration fees apply to participants taking accommodation at the Princess Hotel. Should participants make reservations elsewhere, there will be a supplement to the registration fee of US\$ 200 per person.

If you are interested in bringing a partner, a registration fee of US\$ 600 for your partner will be charged in addition to accommodation.

APPLICATION FOR BURSARIES

Bursaries will be made available to young scientists (45 years and younger). The bursary will cover free accommodation in a shared room, waiver of course registration fee and a travel bursary of up to US\$ 500.

Potential candidates are kindly requested to submit

- a letter of application
- a CV
- a recommendation letter from the head of their department or the head of their research lab
- if possible, an abstract based on research work

These documents should be forwarded to the Course Secretariat by email to eilatedu@targetconf.com and will be evaluated by the Course Organizing Committee. Since the number of bursaries is restricted we recommend that candidates submit their applications before October 31, 2008.

PAYMENT

Payment for registration fees must be paid directly to the Secretariat and can be made by cheque, bank transfer* or credit card. Kindly refer to the registration form for details.

*Please ensure that the name/s of the participant/s and International Course are clearly stated on the bank transfer. Bank charges are the responsibility of the payee and should be paid at source in addition to the registration fees.

GENERAL INFORMATION (cont.)

CANCELLATION POLICY

Our refund policy is based upon receiving notification as follows:

Notification received prior to July 10, 2009: Full refund less US\$ 100 handling fee.

Notification received prior to August 20, 2009: 50% refund.

Notification received after August 20, 2009: No refund.

LETTER OF INVITATION

Upon request, the Secretariat will send a personal invitation to participate in the Course. It should be understood that such an invitation is only meant to assist participants in raising travel funds or obtaining a visa and does not represent a commitment on the part of the Organizing Committee.

CLIMATE AND CLOTHING

The weather in Eilat in September is hot and dry. Clothing is informal for all occasions. Don't forget your sunglasses, swimwear, hat and comfortable walking shoes.

TRAVEL AND ACCOMMODATION

Target Conferences Ltd.

P.O. Box 29041, Tel Aviv, Israel

Tel: +972 3 5175150

Fax: +972 3 5175155

email: target@targetconf.com

Target Conferences is the official travel agent of the 3rd Eilat International Educational Course:

PHARMACOLOGICAL TREATMENT OF EPILEPSY and will be offering special reduced rates for accommodation and conference tours.

Hotel space has been blocked by Target Conferences at the Princess Hotel.

Single room (one person) US\$ 150

Double room (two people) US\$ 180

Rates are per night, per room, and include Israeli buffet style breakfast and service charge.

NOTE

Check-in to the Princess Hotel Eilat is usually at 14:00 hours, and check-out at noon, but on a Saturday check-out time is officially after Sabbath (about 20:00 hours).

HOW TO BOOK

In order to benefit from the special rate, kindly ask your Travel Agent to contact TARGET CONFERENCES, or send enclosed Accommodation Form with the required deposit of US\$ 150 to Target Conferences, at your earliest convenience.

PAYMENT

Payment for accommodation and tours reserved directly with Target Conferences is to be made (less deposit) upon arrival at the Target Conferences Hospitality Desk at the venue, with a 3% surcharge. If Target Conferences receives full payment for all services requested prior to arrival, there will be no surcharge. Target Conferences accepts travelers cheques, Eurocheques (in the currency of the issuing country) and major credit cards.

AIR TRAVEL

It is recommended to book your international air travel to/from Ben Gurion International Airport (Tel Aviv) with your local travel agent and/or on the internet, and to consult with or book your domestic flights to/from Eilat with a Target Conferences' Representative.

TRANSPORT TO/FROM BEN GURION INTERNATIONAL AIRPORT AND SDE DOV DOMESTIC AIRPORT (TEL AVIV) FOR FLIGHTS TO EILAT

If you have booked a connecting domestic flight departing from Ben Gurion airport, there are free shuttles between the two terminals at the airport. Don't forget to allow at least 2.5 hours between the two flights. Taxis to Sde Dov are available from the airport at all times. For these domestic flights please allow 3-3.5 hours between connecting flights.

TRANSPORTATION TO/FROM CONFERENCE VENUE

Taxi fares between the domestic airport in Eilat and the Princess Hotel are very reasonable (about US\$10 or less).

CANCELLATION OF ACCOMMODATION

Up to 90 days prior to arrival – full refund of deposit, less bank charges.

Up to 45 days prior to arrival – cancellation charge of US\$ 150 per room.

Thereafter: no refund on deposit.

PRE and POST COURSE TOURS (optional)

Information regarding Pre and Post Course Tours will be available on the course website:

www.eilat-aeds.com or by contacting Target Conferences, P.O. Box 29041, Tel Aviv, Israel,

Tel: +972 3 5175150, Fax: +972 3 5175155

email: target@targetconf.com

3rd Eilat International Educational Course:
PHARMACOLOGICAL TREATMENT OF EPILEPSY
Israel, September 6 – 13, 2009

REGISTRATION FORM

Please **TYPE** or **PRINT** in **BLOCK LETTERS** and AIRMAIL or FAX to: Target Conferences, P O Box 29041, Tel Aviv 61290, Israel
Tel: +972 3 5175150, Fax: +972 3 5175155

Family Name _____

First Name/s _____

Title: Prof. Dr. Mr. Ms.

Full Mailing Address _____

City _____ State _____

Zip Code _____ Country _____

Tel _____ Fax _____

e-mail _____

Accompanying Person:

Family Name _____ First Name _____

REGISTRATION FEES

July 10, 2009

	Before	After
Participant	<input type="checkbox"/> US\$ 700	<input type="checkbox"/> US\$ 800
Accompanying person	<input type="checkbox"/> US\$ 600	<input type="checkbox"/> US\$ 600

Enclosed please find **cheque** in the amount of US\$ _____ payable to EILAT
cheque no. _____ Bank _____ or

I have made a **bank transfer** of US\$ _____ as follows:
Bank Leumi, North Branch, 87 Ben Yehuda Street, Tel Aviv, Israel
to account number **804-213993/74** (Copy enclosed) or

Charge US\$ _____ to **credit card** as below:

American Express Diners Club MasterCard Visa

Credit Card No. _____

Expiry Date _____

Last three numbers on back of card _____

Signature _____ Date _____

3rd Eilat International Educational Course:
PHARMACOLOGICAL TREATMENT OF EPILEPSY
Israel, September 6-13, 2009

ACCOMMODATION FORM

Please **TYPE** or **PRINT** in **BLOCK LETTERS** and AIRMAIL or
FAX to: Target Conferences, P O Box 29041, Tel Aviv 61290, Israel
Tel: +972 3 5175150, Fax: +972 3 5175155

Family Name _____

First Name/s _____

Title: Prof. Dr. Mr. Ms.

Full Mailing Address _____

City _____ State _____

Zip Code _____ Country _____

Tel _____ Fax _____

e-mail _____

I/ We require accommodation for the Educational Course at the
Princess Hotel, as follows:

Check in date _____ Check out date _____ No. of nights _____

Single Occupancy Double Occupancy*

* I will share my room with _____

Important for organizational purposes, kindly complete/send when
available:

Flight details:

Arrival date: _____ Airline/Flight No: _____ at _____ hours

Departure date: _____ Airline/Flight No: _____ at _____ hours

A deposit of US\$150 per room must accompany all requests.

Payment by:

Cheque, payable to Target Conferences Ltd., herewith enclosed.

Bank transfer of US\$ _____

made out to Target Conferences Ltd,

Bank Leumi, North Branch, 87 Ben Yehuda Street, Tel-Aviv, Israel

Account number: 804-341500/08

Credit card, charge US\$ _____ as follows:

American Express Diners Club MasterCard Visa

Credit Card No. _____

Expiry Date _____

Last three numbers on back of card _____

Signature _____ Date _____

COURSE SECRETARIAT

For any additional information, please contact the Secretariat:

Target Conferences

P.O. Box 29041, Tel Aviv 61290, Israel

Tel: +972 3 5175150

Fax: +972 3 5175155

email: eilatedu@targetconf.com

VISIT OUR WEBSITE:

www.eilat-aeds.com

